

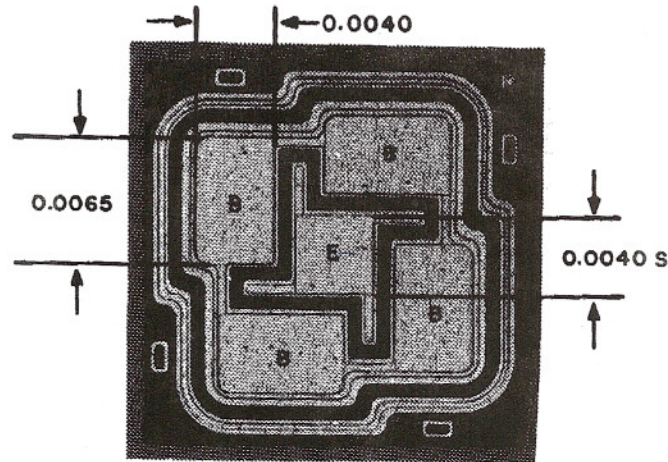


# Sierra Components, Inc.

2222 Park Place • Suite 3E • Minden, Nevada 89423

Phone: 775.783.4940 Fax: 775.783.4947

Chip back potential is the level which bulk silicon is maintained by on-chip connection, or it is the level to which the chip back must be connected when specifically stated below. If no potential is given the chip back should be isolated.



**Top Material:**  
**Backside Material:**  
**Bond Pad Size:**  
**Backside Potential:**  
**Mask Ref:**

**APPROVED BY:MG**

**DIE SIZE :23 x 23**

**DATE: 4/6/09**

**MFG:Sprague**

**THICKNESS:**

**P/N:BCY71**